

Some Lines of Descent to St. Gregory, the *Illuminator*, Bishop of Leontius

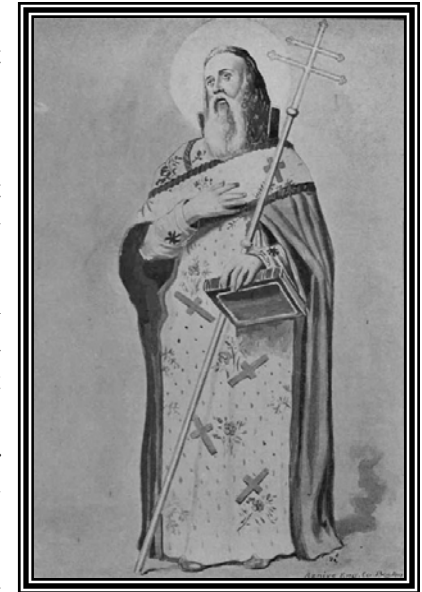
Bishop Gregory of Leontius, now called St. Gregory, the *Illuminator*, Bishop of Leontius, was the first official head of the Armenian Apostolic catholic church. In modern times, he is revered as the Patron Saint of that church, being credited with the conversion of his people from paganism to Christianity in about 301-314 AD. His work led to Armenia's becoming the first Christian nation on Earth.

St. Gregory was born about the year 257 in Armenia, but perhaps as early as 239, according to different sources. His name was Grigor Lusavorich. As a youth, he was taken to Caesarea after his father, Anak Partev (the Parthian) assassinated King Khosrov of Kadj (Parthia), and it was there that Gregory was introduced to the Christian faith. He had been taken there for his protection after members of the King's family succeeded in their retaliation against his family for his father's infamous act. In about the year 280, he returned to Armenia where he preached for the remainder of his life. Although the years are a bit ambiguous, it appears that in about 300-314, he was consecrated Bishop, and the following year, he baptized several members of the royal court, including Tiridates III, as well as many other upper class nobles. At that time Tiridates issued a decree for Gregory to begin the movement of converting the nation to Christianity. Gregory died in Armenia in or very near the year 331. After his death, his body was taken to Thodanum.

Called an *Illuminator*, he received this moniker because he is revered as one who enlightened the people about Christianity. In the days of Christ, there were the apostles. As they died, their work continued by way of others who brought enlightenment to and conversion of the masses to Christian teachings.

Today, St. Gregory is recognized by all facets of the Catholic faith, as well as by the Anglicans. His feast day varies from Catholic rite to Catholic rite, but in the apostolic church, it floats, being the Saturday before the 4th Sunday after Pentecost. In the Eastern and Roman churches, it is September 30. Among the writings about his life is Vartabed Matthew's *A Life of Gregory*, published in Armenian (1749) and translated into English by Father Malan (1868). Many websites also contain brief biographical information about Gregory.

In the 21st Century, Gregory's descendants number in the millions, with most Gateway Ancestors providing multiple avenues to this illustrious forefather. The following pages outline many directions by which we may find a descent. Observers should keep in mind that these are not the only avenues, but they do encompass the more likely options available to most people who can claim royal descent. If you are already a member of **Saints and Sinners**, and you would like to recognize your line a descent from St. Gregory, you may do so by contacting the Genealogist. If you have not yet become a member of the Society but wish to do so, please click on the "Membership" tab at the left and send a request for membership information by connecting to the link provided.



St. Gregory, the *Illuminator*
from: *Illustrated Armenia and
Armenians*, 1898



St. Gregory the Illuminator, Bishop of Leontius

(c. 256-326)

Chart 1A

† **St. Vrtanes** of Armenia (d. 339)

† **St. Husik** of Armenia (martyr c. 344)
= a dau. of Tiridates III, King of Armenia

Athenagenes of Armenia
= Bambishu (b. 315), dau. of Khrosrow III, King of Armenia,
who was the son of **St. Tiridates IV**, “the Great,” 1st†
Christian king of Armenia by his wife,
St. Ashken of Armenia †

† **St. Nerses I**, “the Great,” Bishop of Armenia (335-373)
= Samdukht

† **St. Isaac I**, “the Great,” Bishop of Armenia (martyr)
(d. 439)

Sahakanoysh of Armenia
= Hamazasp, Prince of the Mamikonids

† **St. Hmayak** Mamikonian, Ambassador to Constantinople (410-451)
= Dzoyk of the Rshtuni

Vard, Mamikonian Viceroy of Armenia (b. 450; liv. 509)

Hmayeak, Mamikonian Viceroy of Armenia (d. 593)

Moushegh I, Mamikonian Viceroy and High Constable of Armenia

Vahan II, Mamikonian Prince of Taraun (b. 555; d. c. 600)

Dawith, a Mamikonian, probably a priest

Hamazasp III, Mamikonian maezpan and Curopolate (610-658)
= a dau. of Theodore I, Prince of Rshtouni

Artavazd, a Mamikonian patrician (b. c. 655)

Hmayak, a Mamikonian patrician (700-c. 788)

© 2019 Alexander Bannerman

Sources:

Stuart, *Royalty for Commoners*, 4th ed., lines 25, 54, 94, 237, 253, 322, 322A, 333, 361, 378, 416
Gérard Dédéyan (comp.), “Histoire du peuple arménien” (Toulouse, France: by the comp., 2007), ISBN 978-2-7089-6874-5, p. 167.

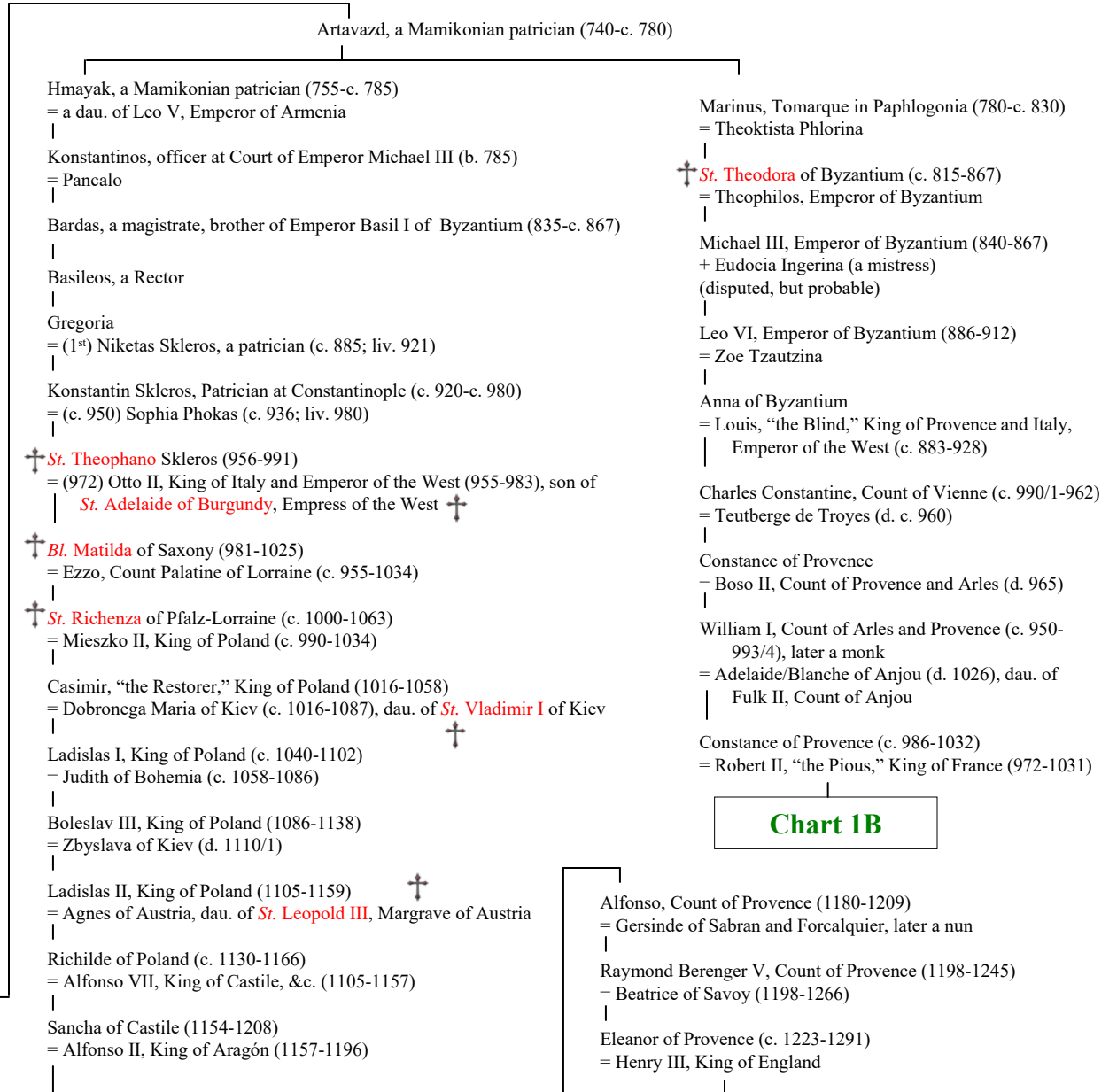


Chart 1B

Alfonso, Count of Provence (1180-1209)
= Gersinde of Sabran and Forcalquier, later a nun

Raymond Berenger V, Count of Provence (1198-1245)
= Beatrice of Savoy (1198-1266)

Eleanor of Provence (c. 1223-1291)
= Henry III, King of England

Chart 18

From Chart 1A

Chart 1B

Lines to
Beaumont and Warenne



France

Constance of Provence

= Robert II "the Pious," King of France

Henry I, King of France
= Anne of Kiev (see Charts 1E, 15)

† St. Adèle of France
= (1) Richard III, Duke of Normandy
= (2) Baldwin V "the Pious,"
Count of Flanders

See Chart 15

Philippe I "the Amorous,"
King of France
= Bertha of Holland

Hugh Magnus, Duke (King) of France
= Adelaide de Vermandois

See Chart
1E

Mahaut de Vermandois
= Raoul, Sire de Beaugency

Robert de Beaumont (1) = Isabel de Vermandois = (2) William de Warenne
Earl of Leicester Earl of Surrey

Isabel de Beaumont
= Gilbert de Clare

Robert de Beaumont
= Amice de Montfort

Gundred de Warenne
= Roger de Beaumont

Ada de Warenne
= Henry of Huntingdon

Richard Fitz-Gilbert de Clare
"Strongbow"
= Aoife (Eve) of Leinster

Maud de Beaumont
= William de Lovel

Waleran de Beaumont
= Agnes de Montfort

William I ("the Lion"),
King of Scotland

Isabel Fitz-Gilbert deClare
= William Marshal, Earl of Pembroke
Earl Marshal of England
Supporter of the *Magna Charta*



Marshal



Leicester

William de Warenne
3rd Earl of Surrey
= Ela de Talvas



Scotland

See Chart 3

See Chart 14

© 2018 Alexander Bannerman

Sources:
 Weis, *Ancestral Roots*, 8th ed., lines 27, 50, 53,101, 107, 121E, 132C, 141, 144A, 175, 176, 178, 215, 239, 252, 260
 Richardson, *Royal Ancestry*, 5 vols. (2013), I:364-366, 555, 557, 589, 596-599, 605, II:184-192, 298-303, 561-564, IV:40-41, 47-55, 339, V:301-304, 310
 Boyer, *Medieval Welsh Ancestors of Certain Americans* (2004), pp. 300-302, 306-307, 310
 G. F. Cokayne, *The Complete Peerage*, 13 vols. repr. in 6 (1987)



France

From Chart 1B

Chart 1E

The Early Kings of France
(continued)

Henry I, King of France

= Anne of Kiev

Philippe I "the Amorous," King of France

= (1st) Bertha of Holland

Louis VI "le Gros," King of France

= (2nd) Alix of Savoy

Louis VII "le Jeune," King of France

= (3rd) Adèle of Blois

Philippe II Augustus, King of France

= (1st) Isabelle of Hainaut (see Chart 15)

Louis VIII "le Lion," King of France

= Blanche of Castile (see Chart 17)

Hugh Magnus, Duke (King) of France

= Adelaide de Vermandois

See Chart 1B

Robert I of France, Count of Artois
= Matilde of Brabant

See Chart 18



King St. Louis IX of France (see Chart 18)

= Marguerite of Provence

Philippe III "le Hardi," King of France

= (1st) Isabella of Aragón

= (2nd) Marie de Brabant

See Charts 16, 17

© 2018 Alexander Bannerman

Sources:

Weis, *Ancestral Roots*, 8th ed., lines 241, 242

Richardson, *Royal Ancestry*, 5 vols. (2013), III:18-33

"Rurik," entry on the internet at <https://en.wikipedia.org/wiki/Rurik>

"Igor of Kiev," entry on the internet at https://en.wikipedia.org/wiki/Igor_of_Kiev

Chart 15

Chart 1H

William the Conqueror = Maud of Flanders



Vikings

Henry I "Beauclerc," King of England = Matilda of Scotland



Henry II of England

Matilda/Maud of England
= Geoffrey Plantagenet V, Count of Anjou and Duke of Normandy



Geoffrey of Anjou



Empress Matilda/Maud of England

Eleanor of Aquitaine = **Henry II Plantagenet** + (1) Ida de Toeni
King of England

Maud Plantagenet
= Henry XII
Duke of Saxony



Geoffrey Plantagenet, Duke of Brittany
= (1) Constance of Brittany (see Chart 14)
= (2) Eustache de Mauléon



Eleanor Plantagenet
= Alfonso VIII
King of Castile (see Chart 17)



Joan Plantagenet
= William II,
King of Sicily



JOHN Plantagenet
King of England
= Isabelle of Angoulême (see Chart 15)
+ Clemence ____ (a concubine)



John of England

William Longespée
Earl of Salisbury
+ **Bl. Ela of Salisbury**



Longespée

Richard Plantagenet,
Earl of Cornwall
+ *unk. mistresses*



Henry III, King of England
= **Eleanor of Provence**



Joan Plantagenet
= Alexander II,
King of Scotland



Isabel Plantagenet
= HRE Frederick II
von Hohenstauffen



Joan of England
= Llewellyn ap Iorwerth,
Prince of N. Wales (see Chart 2)



Llewellyn ap Iorwerth

EDWARD I, King of England
= (1) Eleanor of Castile
= (2) Marguerite of France (see Chart 17)



Beatrice Plantagenet
= John II, Duke of Brittany
and Earl of Richmond



Edmund Plantagenet, "Crouchback,"
Earl of Lancaster and Leicester
= Blanche of Artois (see Charts 16, 18)



Margaret Plantagenet
= Alexander III,
King of Scotland



EDWARD II, King of England
= Isabelle of France (see Charts 16, 17)



Eleanor Plantagenet
= Henry III,
Count of Bar



Joan Plantagenet of Acre
= (1) Gilbert de Clare,
Earl of Gloucester
= (2) Ralph de Monthermer



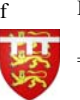
Margaret Plantagenet
= Jean II, Duke of
Lorraine



Elizabeth Plantagenet
= (1) Johann I, Count of Holland
= (2) Humphrey de Bohun,
Earl of Hereford and Essex (See Charts 5, 17)



Thomas Plantagenet of Brotherton
= (1) Alice de Hales
= (2) Mary de Brewes



Edmund Plantagenet of Woodstock
= Margaret Wake (see Chart 4)



EDWARD III, King of England
= Philippa of Hainaut



Eleanor Plantagenet
= Edward II, Count of Guelders



© 2019 Alexander Bannerman
Sources: Richardson, *Royal Ancestry*, 5 vols. (2013), I:24-97, II:298-301

Edward of Woodstock, K.G.
the Black Prince,
Prince of Wales
= Joan Plantagenet,
"Fair Maid of Kent" (see Chart 4)



Isabel of Woodstock
= Enguerrand de Coucy, K.G.
Count of Soissons, &c.



Enguerrand

Lionel of Antwerp, K.G.
5th Earl of Ulster, &c.
= (1) Elizabeth de Burgh



Lionel of Antwerp

John of Gaunt, K.G.
Duke of Aquitaine, &c.
= (1) Blanche of Lancaster
= (2) Constance of Castile
= (3) Katherine Roet



John of Gaunt



Edmund of Langley

Edmund of Langley, K.G.
1st Duke of York
= (1) Isabella of Castile (see Chart 16)
= (2) Joan de Holand



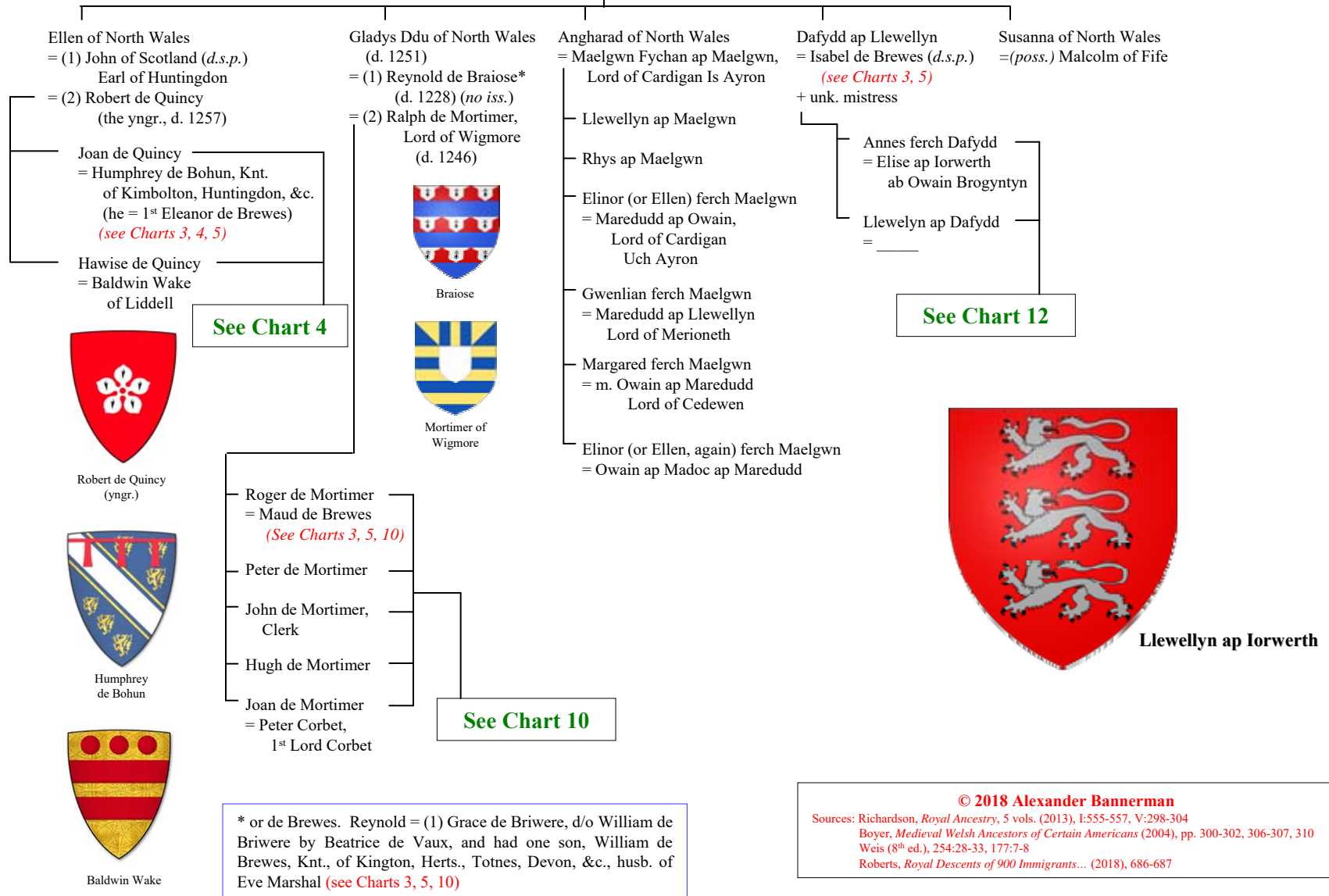
Thomas of Woodstock, K.G.,
Duke of Gloucester
= Eleanor de Bohun
Thomas of Woodstock



From Chart 1A

Chart 2

Joan (dau. of King John of England) = LLEWELLYN ap IORWERTH, Prince of North Wales
(d. 1237) (1173-1240)



* or de Brewes. Reynold = (1) Grace de Briwere, d/o William de Briwere by Beatrice de Vaux, and had one son, William de Brewes, Knt., of Kington, Herts., Totnes, Devon, &c., husb. of Eve Marshal (*see Charts 3, 5, 10*)

© 2018 Alexander Bannerman
Sources: Richardson, *Royal Ancestry*, 5 vols. (2013), I:555-557, V:298-304
Boyer, *Medieval Welsh Ancestors of Certain Americans* (2004), pp. 300-302, 306-307, 310
Weis (8th ed.), 254:28-33, 177:7-8
Roberts, *Royal Descents of 900 Immigrants...* (2018), 686-687

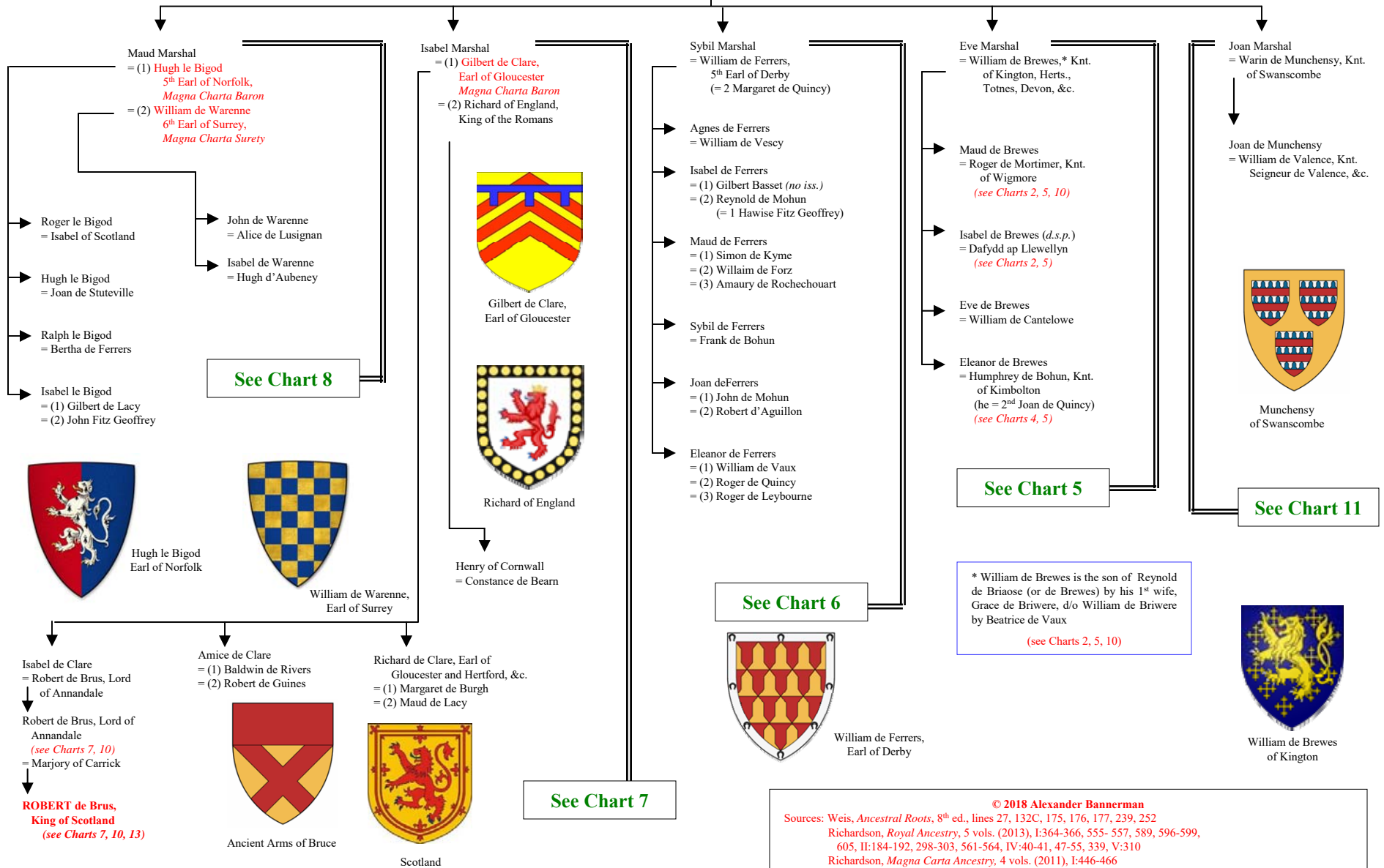
From Chart 1B

Chart 3



William Marshal

William Marshal = Isabel Fitz-Gilbert de Clare
Earl of Pembroke suo jure Countess of Pembroke



© 2018 Alexander Bannerman
 Sources: Weis, *Ancestral Roots*, 8th ed., lines 27, 132C, 175, 176, 177, 239, 252
 Richardson, *Royal Ancestry*, 5 vols. (2013), I:364-366, 555-557, 589, 596-599,
 605, II:184-192, 298-303, 561-564, IV:40-41, 47-55, 339, V:310
 Richardson, *Magna Carta Ancestry*, 4 vols. (2011), I:446-466

From Chart 2

Chart 4

John of Scotland, Earl of Huntingdon (1) = Ellen of North Wales = (2) Robert de Quincy of Wakes Colne, &c.
(*d.s.p.*)

(2nd of the name, d. 1257)
son of Saher de Quincy *Magna Charta* Baron



Principality of Wales

Joan de Quincy (*d.s.p.*)
= Humphrey de Bohun, Knt., of Kimbolton, Huntingdon, &c.
(he = 1st Eleanor de Brewes)
(see Charts 3, 5)



Humphrey de Bohun

Hawise de Quincy
= Baldwin Wake of Liddell



Baldwin Wake

John Wake, 1st Lord of Wake
= Joan de Fiennes

Hugh Wake, of Winterbourne Stoke
= Joan de Belauney

Thomas Wake, 2nd Lord Wake (*d.s.p.*)
= Blanche of Lancaster
John Wake (*d.s.p.*)
Margaret Wake

Hugh Wake, Knt.
Mirabel (or Muriel) Wake
= (1) Hugh de St. John
2nd Lord St. John of Basing
= (2) Thomas de Aspale, Knt.
of Lackford, Suffolk

= (1) John Comyn of Badenoch
= (2) Edmund of Woodstock
Earl of Kent, &c.
(see Chart 17)

Edmund de St. John
3rd Lord St. John of Basing (*d.s.p.*)
= Elizabeth le Strange

Margaret de St. John
= John de St. Philibert

Isabel de St. John
= (1) Henry de Burghersh (*d.s.p.*)
= (2) Luke de Poynings

John de Aspale, Knt. of Lackford, Suffolk
= Katherine Pecche

Robert de Quincy (yng.)



Aymer Comyn (*d.s.p.*)

Edmund of Kent, 2nd Earl of Kent (*d.s.p.*)

Margaret of Kent (*d.s.p.*)
= Amanieu d'Albret

Joan "Fair Maid" of Kent
= (1) Thomas de Holand, K.G. of Broughton, &c., Earl of Kent
= (2) Edward of Woodstock, *the Black Prince*

John of Kent (*d.s.p.*)
= Elizabeth of Jülich



Thomas de Holand
Earl of Kent



Edward of Woodstock



St. John



Aspale

© 2018 Alexander Bannerman

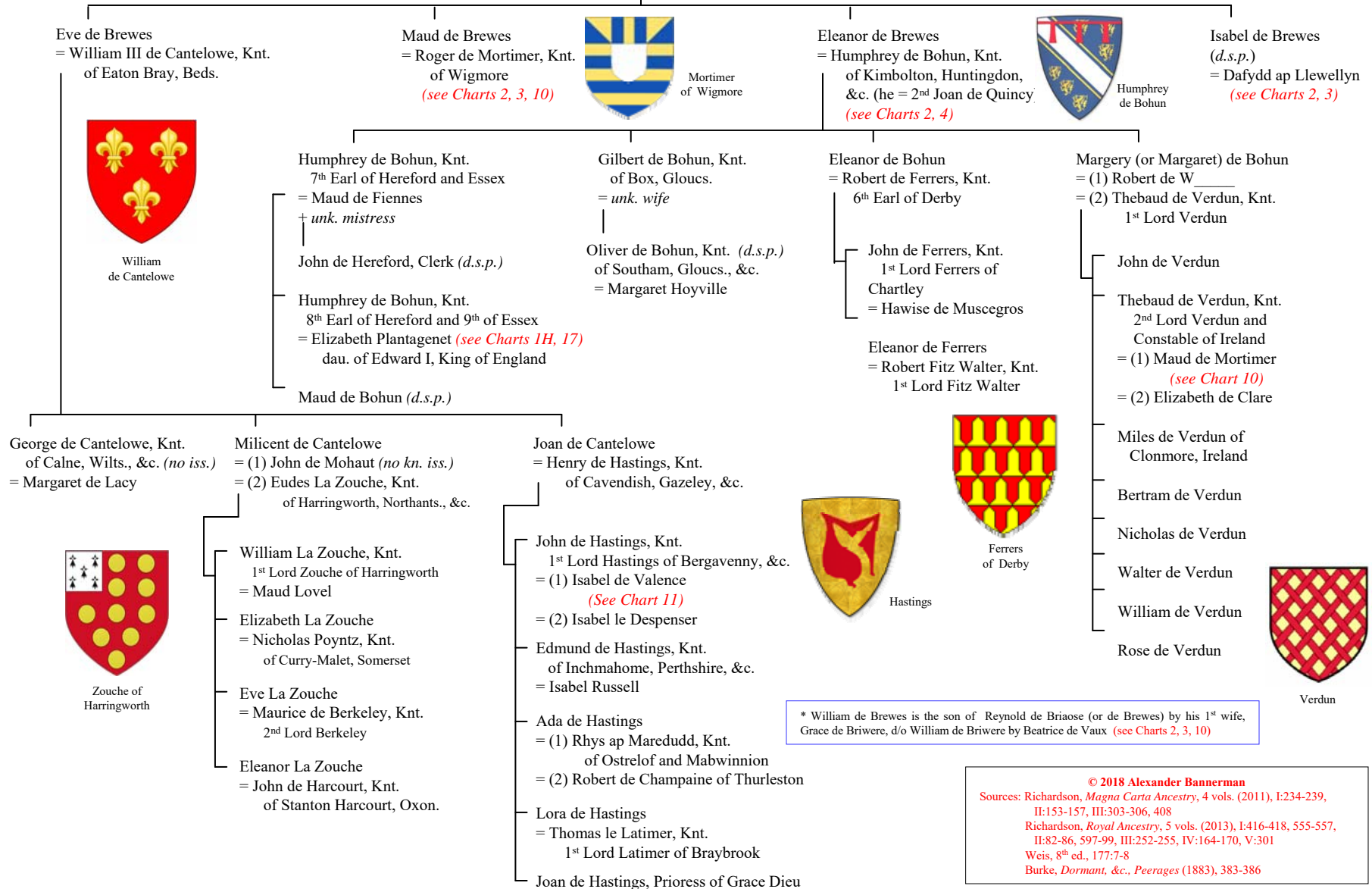
Sources: Weis (7th ed.), 236:7-12
Richardson, *Magna Carta Ancestry*, 4 vols. (2011), I:234, II:474-496, III:303-306, 408
Roberts, *Royal Descents of 900 Immigrants...* (2018), 682-683



Braiose

From Chart 3

Eve Marshal = William de Brewes,* Knt., of Kington. Herts., Totnes, Devon, &c.



* William de Brewes is the son of Reynold de Braiose (or de Brewes) by his 1st wife, Grace de Briwere, d/o William de Briwere by Beatrice de Vaux (see Charts 2, 3, 10)

© 2018 Alexander Bannerman
Sources: Richardson, *Magna Carta Ancestry*, 4 vols. (2011), I:234-239, II:153-157, III:303-306, 408
Richardson, *Royal Ancestry*, 5 vols. (2013), I:416-418, 555-557, II:82-86, 597-99, III:252-255, IV:164-170, V:301
Weis, 8th ed., 177:7-8
Burke, *Dormant, &c., Peerages* (1883), 383-386

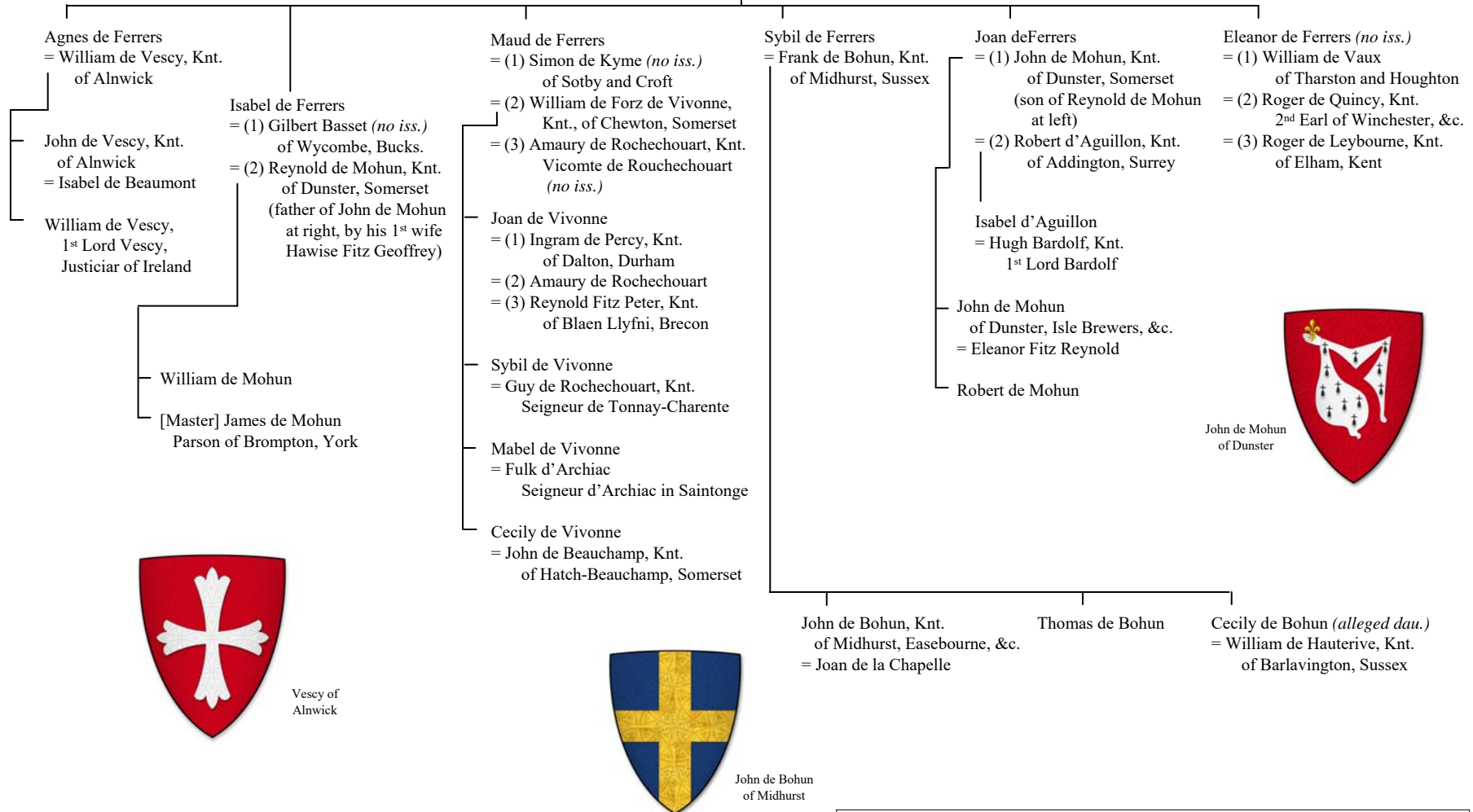
Chart 6

From Chart 3



William de Ferrers,
Earl of Derby

Sybil Marshal = William de Ferrers, 5th Earl of Derby



Vescy of Alnwick

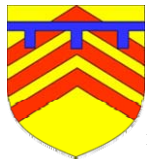


John de Bohun of Midhurst



John de Mohun of Dunster

© 2018 Alexander Bannerman
Sources: Richardson, *Royal Ancestry*, 5 vols. (2013), I:306, II:561-564, III:452, 608, IV:8-10, 100-102, 447



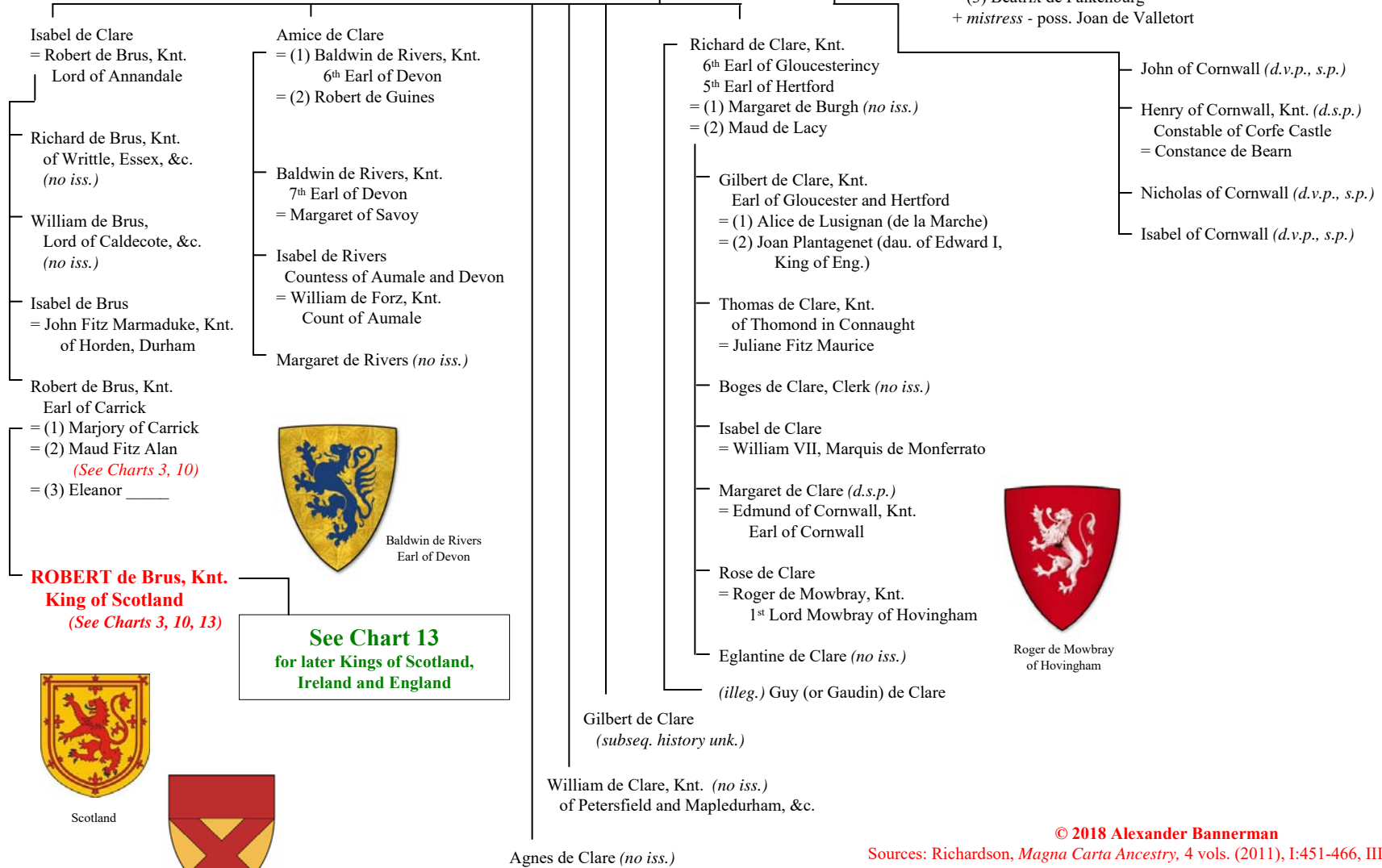
Gilbert de Clare,
Earl of Gloucester

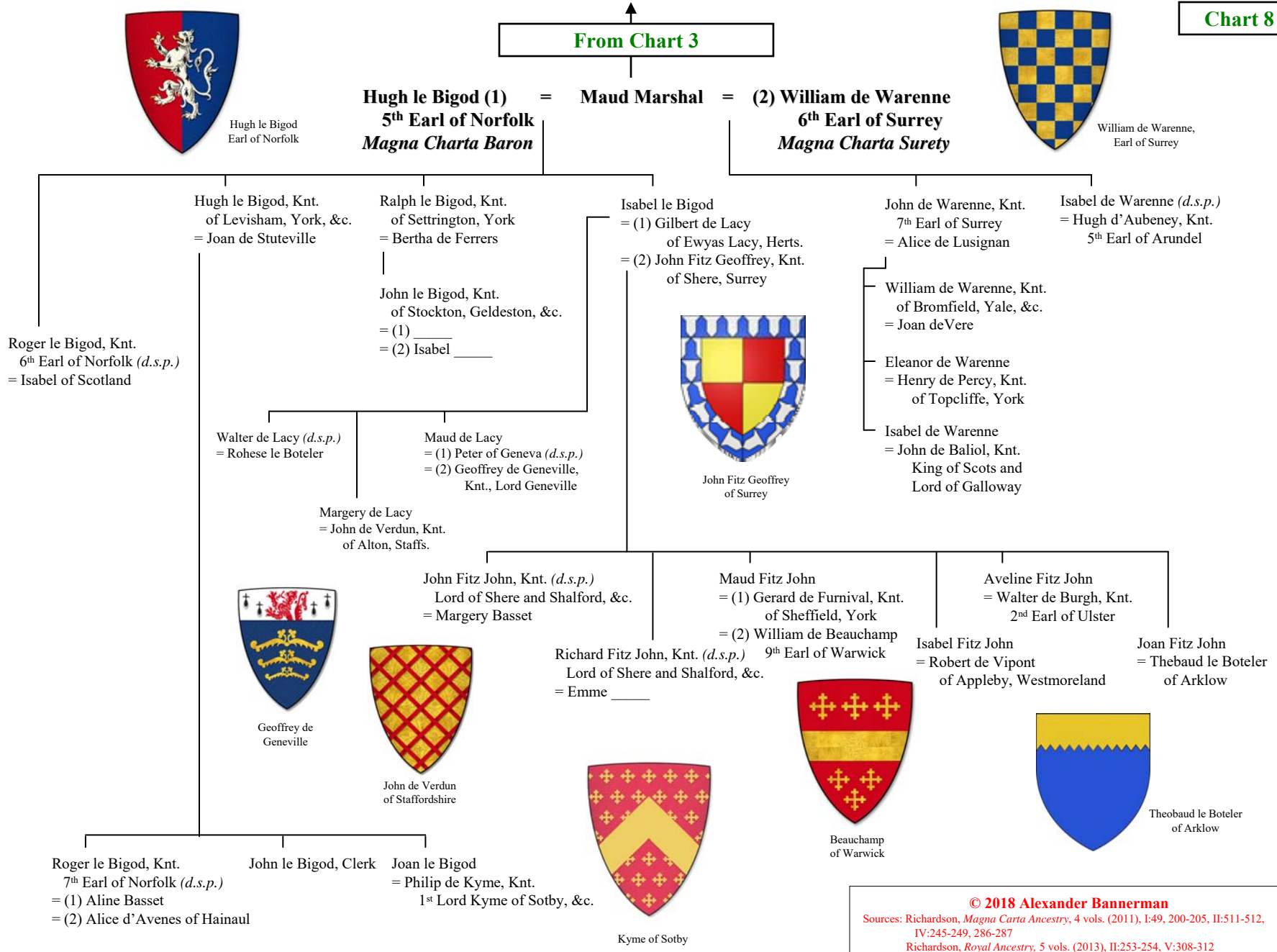
From Chart 3

Gilbert de Clare (1) = Isabel Marshal = (2) Richard of England
Earl of Gloucester
Magna Charta Baron
King of the Romans



Richard of England

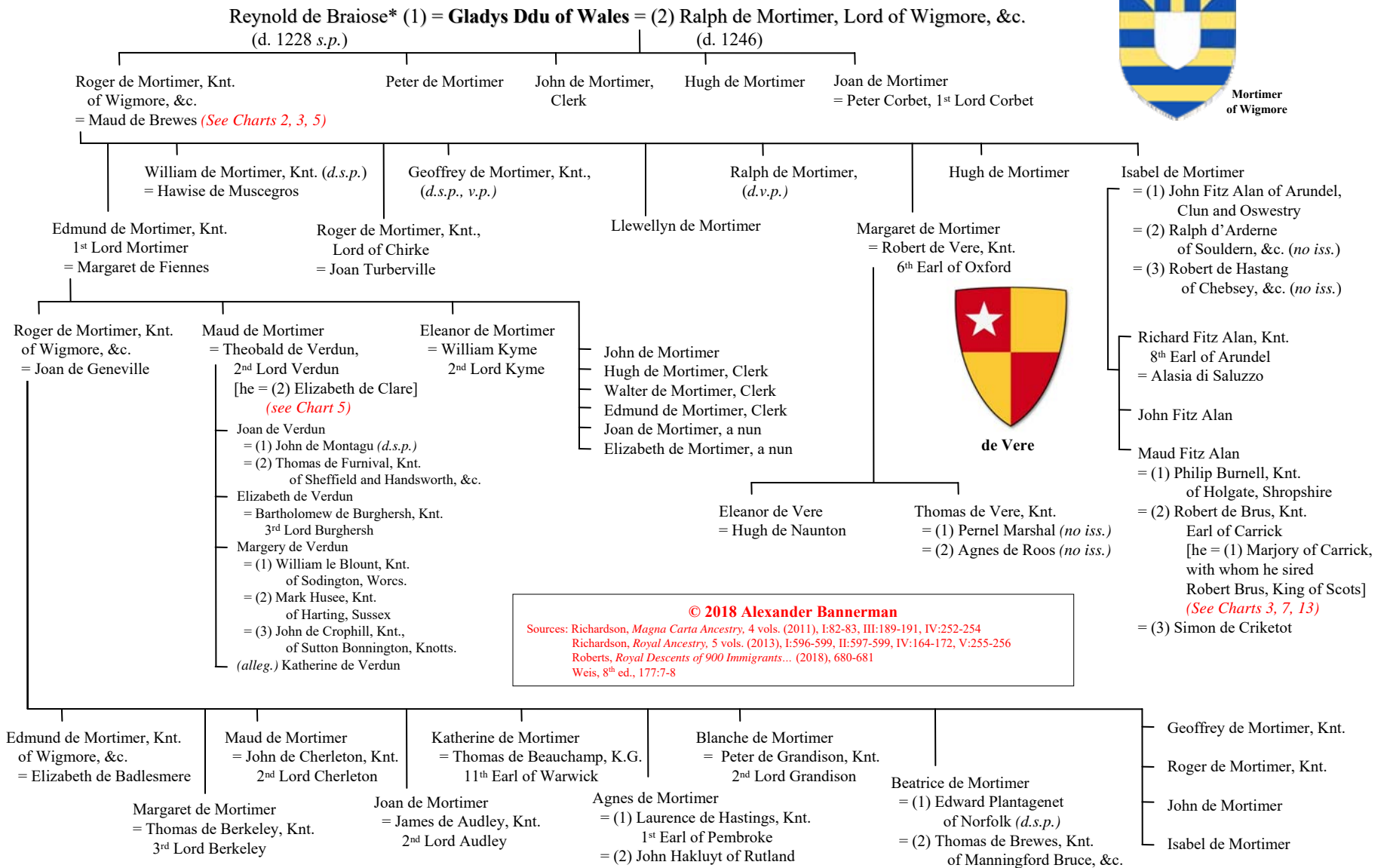




© 2018 Alexander Bannerman
 Sources: Richardson, *Magna Carta Ancestry*, 4 vols. (2011), I:49, 200-205, II:511-512, IV:245-249, 286-287
 Richardson, *Royal Ancestry*, 5 vols. (2013), II:253-254, V:308-312

From Chart 2

Chart 10



© 2018 Alexander Bannerman
 Sources: Richardson, *Magna Carta Ancestry*, 4 vols. (2011), I:82-83, III:189-191, IV:252-254
 Richardson, *Royal Ancestry*, 5 vols. (2013), I:596-599, II:597-599, IV:164-172, V:255-256
 Roberts, *Royal Descents of 900 Immigrants...* (2018), 680-681
 Weis, 8th ed., 177:7-8

* Or "de Brewes." Reynold = (1) Grace de Briwere, d/o William de Briwere by Beatrice de Vaux, and had one son, William de Brewes, Knt., of Kington, Herts., Totnes, Devon, &c., husb. of Eve Marshal (see Charts 2, 3, 5)



Munchensy of Swanscombe

From Chart 3

Joan Marshal (1) = Warin de Monchensy, Knt. of Swanscombe



Valence

Chart 11

John de Munchensy (no iss.)

Joan de Munchensy = William de Valence, Knt. Seigneur de Valence, Lord (Earl) of Pembroke, &c. (uterine half-brother of King Henry III of England)

Aymer de Valence, Knt. Earl of Pembroke = (1) Beatrix de Clermont (no iss.) = (2) Marie de Chatillon (no iss.)

Agnes de Valence = (1) Maurice Fitz Gerald 3rd Baron of Offaly (no iss.) = (2) Hugh de Balliol of Newbiggin (no iss.) = (3) Jean d'Avesnes Lord of Beaumont

Isabel de Valence = John de Hastings, Knt. 1st Lord Hastings (his 1st wife) (see Chart 5)

Joan de Valence = John Comyn, Knt. of Badenoch, Scotland

John de Valence (no iss.)

William de Valence Lord of Montignae & Bellac (no iss.)

Margaret de Valence (no iss.)

Jean d'Avesnes

Baudouin d'Avesnes

John Comyn, Knt. of Badenoch in Scotland = Margaret Wake Aymer Comyn (no iss.)

Joan Comyn = David de Strathbogie, Knt. 10 Earl of Atholl and Constable of Scotland

Elizabeth Comyn = (1) Richard Talbot, Knt. 2nd Lord Talbot = (2) John de Browich, Knt. of Bromsberrow and Nailsworth, &c. (no iss.)



Hastings



Athol

David de Strathbogie 11th Earl of Atholl = Katherine de Beaumont

David de Strathbogie 12th Earl of Atholl = Elizabeth de Ferrers

Aymer de Atholl, alias de Achels, Knt. of Felton = Mary _____

Aymer de Atholl

Isabel de Atholl = Ralph Eure, Knt. of Witton

Mary de Atholl = Robert de Lisle

Gilbert Talbot, Knt. 3rd Lord Talbot of Archenfield, &c. = (1) Pernel le Boteler = (2) Joan de Stafford

Joan Talbot = Nicholas Poynings, Knt.

Richard Talbot, Knt. 4th Lord Talbot = Ankaret le Strange

Elizabeth Talbot = Henry de Grey, Knt. 5th Lord Grey of Wilton

William de Hastings, Knt. = Eleanor Martin

John de Hastings 2nd Lord Hastings = Juliane de Leybourne

Joan de Hastings = William de Huntingfield of Huntingfield, Suffolk

Elizabeth de Hastings = Roger de Grey, Knt. 1st Lord Grey of Ruthin

Margaret de Hastings = (1) William Martin 2nd Lord Martin = (2) Robert de Wateville, Knt. Lord Wateville



Talbot

© 2018 Alexander Bannerman

Sources: Richardson, Royal Ancestry, 5 vols. (2013), I:190-194, 232-234, II:184-192, III:255-258, IV:40-55, V:116-119



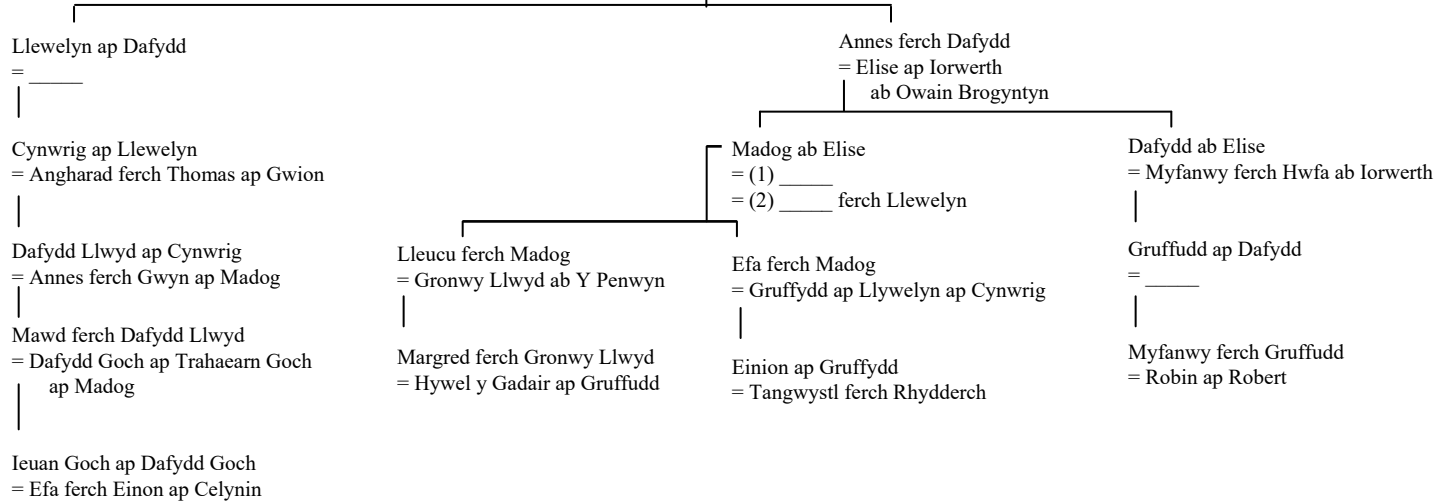
Principality
of Wales

Chart 12

From Chart 2

Joan of England (dau. of King John of England) = LLEWELLYN ap IORWERTH, Prince of North Wales
(d. 1237) (1173-1240)

Dafydd ap Llewellyn
= Isabel de Brewes (*d.s.p.*)
(see Chart 3)
+ unk. mistress



© 2018 Alexander Bannerman
Sources: Roberts, *Royal Descents of 900 Immigrants...* (2018), 650-652,
657-660, 686, 689-690, 693-694



Ancient Arms of Bruce



Scotland

From Charts 3, 7, 10

Stewart Kings of Scotland and Later Kings of England

Chart 13

Isabella of Mar (1) = **ROBERT I de Brus, Knt., King of Scotland** = (2) Elizabeth de Burgh



Robert I

Marjorie Bruce = Walter Stewart, High Steward of Scotland

ROBERT II, King of Scotland
HOUSE OF STEWART

= (1) Elizabeth de Mure
= (2) Euphemia de Ross and Moray



Robert II



Robert III

ROBERT III, King of Scotland
= Annabella Drummond

JAMES I, King of Scotland
= Joan de Beaufort
dau. of John, 1st Earl of Somerset by Margaret de Holand
she = (2) Sir James Stewart



James I



James II

JAMES II, King of Scotland
= Marie of Guelders
dau. of Arnulf, Count of Guelders by Catherine of Cleve



James III

JAMES III, King of Scotland
= Margaret of Denmark
dau. of Christian I, King of Denmark



James IV

JAMES IV, King of Scotland
= Margaret Tudor of England
dau. of **Henry VII, King of England**
HOUSE OF TUDOR



James V

JAMES V, King of Scotland
= (1) Madeleine of Valois (*d.s.p.*)
= (2) Marie de Guise

MARY STUART, Queen of Scots
= (2) Henry Stuart, Lord Darnley



Mary

JAMES VI & I, King of Scotland and England
= Anne of Denmark
dau. of **Frederick II, King of Denmark**



James VI & I

CHARLES I, King of England, Scotland and Ireland
= Henrietta Maria of France
dau. of **Henry IV, King of France**



Charles I

CHARLES II, King of England, Scotland and Ireland
= Catherine of Braganza
dau. of **John IV, King of Portugal**

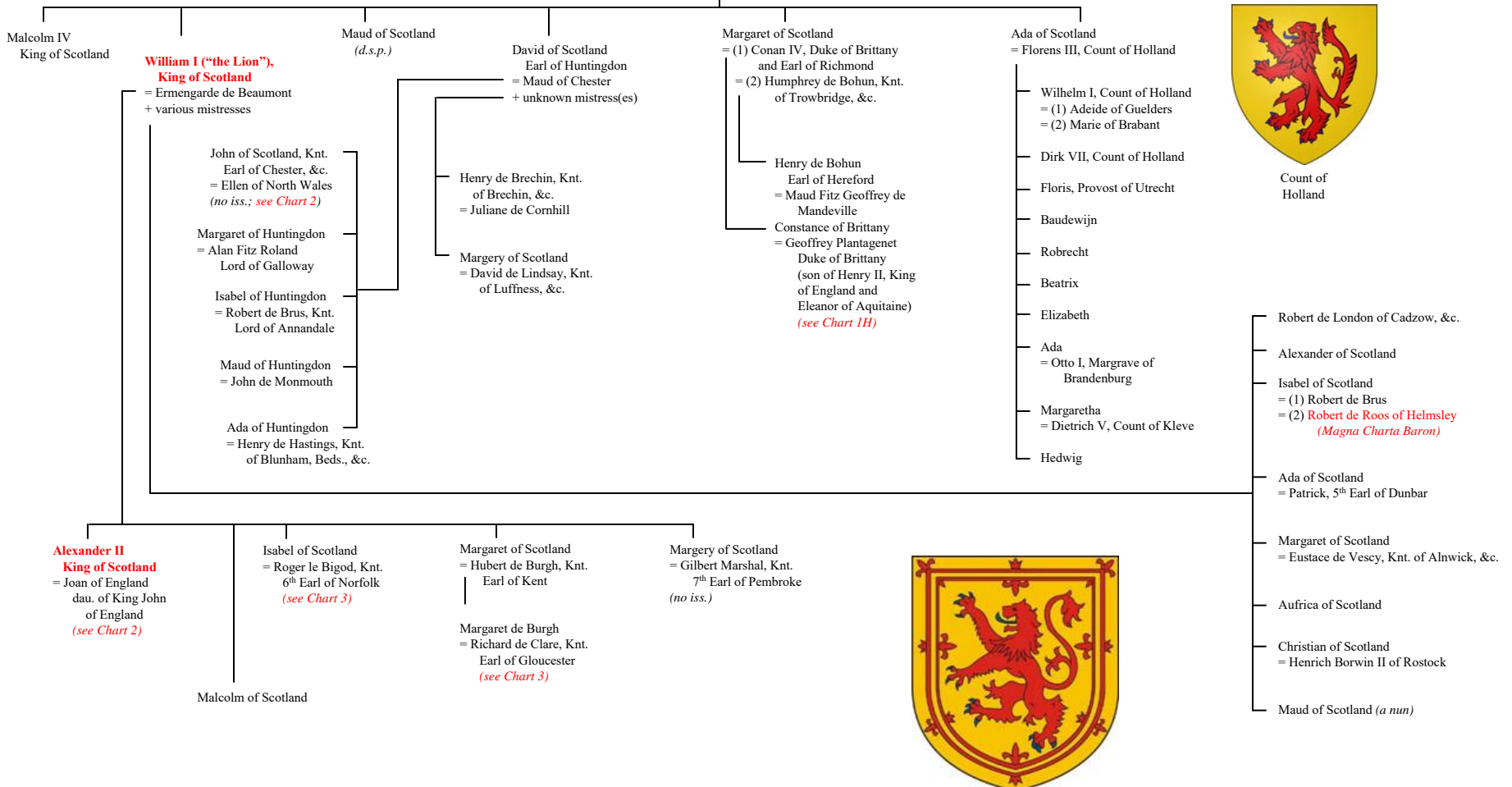


Charles II

© 2018 Alexander Bannerman
Sources: Weis (8th ed.), 252:30-37
<https://en.wikipedia.org/wiki/>

From Chart 1B

Ada de Warenne = Henry of Huntingdon



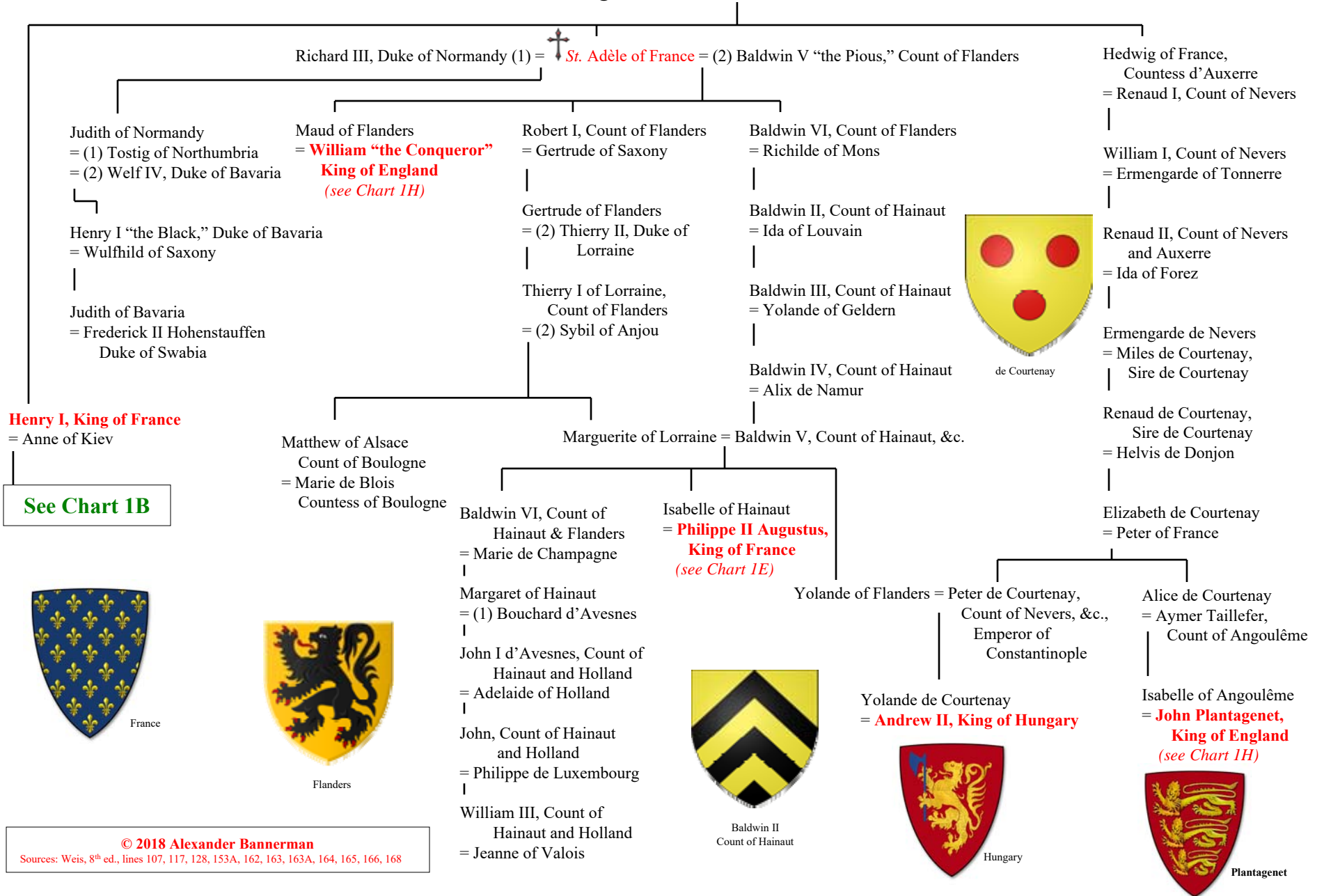
Count of
Holland



Scotland

From Chart 1B

Robert II "the Pious," King of France = Constance of Provence



Henry I, King of France = Anne of Kiev

See Chart 1B



Henry "the Fat"

From Chart 18



Edmund Plantagenet
"Crouchback"

Chart 16

Henry "the Fat," (1) = **Blanche of Artois** = (2) **Edmund Plantagenet**
King of Navarre Earl of Lancaster, &c.

Jeanne I, Queen of Navarre
= Philippe IV "le Bel," King of France
(see Charts 1E, 17)

Thibault of Artois

John Plantagenet (*no iss.*)
Seigneur de Beaufort, &c.
= Alix de Joinville

Henry Plantagenet, Knt.
Earl of Lancaster and Leicester
= Maud de Chaworth

Thomas Plantagenet, Knt. (*no descendants*)
Earl of Lancaster, Leicester & Derby
= Alice de Lacy, Countess of Lincoln, &c.

Henry of Lancaster, K.G.
Duke of Lancaster, &c.
= Isabel de Beaumont



Lancaster

Blanche of Lancaster
= Thomas Wake, Knt.
2nd Lord Wake



Wake

Maud of Lancaster
= (1) William de Burgh, Knt.
4th Earl of Ulster
= (2) Ralph de Ufford, Knt.



de Burgh



de Ufford

Eleanor of Lancaster
= (1) John de Beaumont, Knt.
2nd Lord Beaumont
= (2) Richard Fitz Alan, Knt.
10th Earl of Arundel



FitzAlan

Mary of Lancaster
= Henry de Percy, Knt.
3rd Lord Percy



Percy

Joan of Lancaster
= John de Mowbray, Knt.
3rd Lord Mowbray



Mowbray

Isabel of Lancaster (*no iss.*)

Isabelle of France (see Charts 1H, 17)
= **EDWARD II,**
King of England



Plantagenet

EDWARD III, King of England
= Philippa of Hainault

Philippe V "the Tall,"
King of France and Navarre
= Jeanne of Burgundy



Philippe V

Louis of France
= Eudes IV, Duke of Burgundy

Marguerite of France
= Louis II, Count of Flanders, Nevers, &c.

Isabelle of France
= (1) Guigues VIII, Dauphin of Viennois,
Count of Albon, &c.
= (2) Jean III, Seigneur de Faucogney, &c.

Blanche of France (*no iss.*)

Louis X "the Quarreler,"
King of France and
Navarre
= Clémence of Hungary
|
Jeanne of France
= Philip III, King of Navarre



Louis X



Philippe III



Charles IV

Charles IV "the Bel,"
King of France and
Navarre
= (1) Blanche of Burgundy
= (2) Marie of Luxembourg
= (3) Jeanne d'Évreux

© 2018 Alexander Bannerman

Sources:
Richardson, *Royal Ancestry*, 5 vols. (2013),
1:80-91, 97, 395-397, III:32-36, 476-486

Edward of Woodstock, K.G.
the Black Prince,
Prince of Wales,
"Fair Maid
of Kent"
(see Chart 4)



Edward of
Woodstock

Isabel of Woodstock
= Enguerrand de Coucy, K.G.
Count of Soissons, &c.



Enguerrand

Lionel of Antwerp, K.G.
5th Earl of Ulster, &c.
= (1) Elizabeth de Burgh



Lionel of
Antwerp

John of Gaunt, K.G.
Duke of Aquitaine, &c.
= (1) Blanche of Lancaster
= (2) Constance of Castile
= (3) Katherine Roet



John of
Gaunt



Edmund of
Langley

Edmund of Langley, K.G.
1st Duke of York
= (1) Isabella of Castile
(see Chart 1H)
= (2) Joan de Holand

Thomas of Woodstock, K.G.,
Duke of Gloucester
= Eleanor de Bohun



Thomas of
Woodstock

From Chart 1E

Chart 17

Isabella of Aragón (1) = Philippe III "le Hardi," King of France = (2) Marie of Brabant



France

Philippe IV "le Bel," King of France
= Jeanne I, Queen of Navarre (see Charts 1E, 16, 18)

Eleanor Plantagenet (see Chart 1H)
= **Alfonso VIII, King of Castile**

Berenguela I, Queen of Castile
= Alfonso IX, King of León

Blanche of Castile
= Louis VIII "le Lion,"
King of France (see Chart 1E)



King St. Ferdinand III of Castile and León
= (1st) Beatrice of Swabia (see Chart 1H)
= Jeanne de Dammartin

Eleanor of Castile (1) = **EDWARD I, King of England** = (2) Marguerite of France
(see Chart 1H)

**Kings of France
and Castile
to the Plantagenets**



Castile-León

Louis X, King of France and Navarre
= (1) Margaret of Burgundy
= (2) Clementia of Hungary

Philippe V, King of France and Navarre
= Joan of Burgundy

Charles IV, King of France and Navarre
= (1) Blanche of Burgundy
= (2) Marie of Luxembourg
= (3) Jeanne d'Evreux

Isabelle of France = **EDWARD II,
King of England**
(see Charts 1H, 16)

**EDWARD III,
King of England**
(see Charts 1H, 16)
= Philippa of Hainaut



Plantagenet

Eleanor Plantagenet
= Henry III, Count of Bar
Joan Plantagenet (of Acre)
= (1st) Gilbert de Clare, Earl of
Gloucester and Hertford
= (2nd) Ralph de Monthermer,
1st Lord of Monthermer
Margaret Plantagenet
= Jean II, Duke of Lorraine, Brabant, &c.
Elizabeth Plantagenet
= (1st) Johann I, Count of Holland &c.
= (2nd) Humphrey de Bohun, Knt.,
8th Earl of Hereford and 9th of Essex
(see Chart 5)

Thomas Plantagenet of
Brotherton, Earl of Norfolk
= (1) Alice de Hales
= (2) Mary de Brewes



Thomas of
Brotherton

Edmund Plantagenet of
Woodstock, Earl of Kent
= Margaret Wake
(see Chart 4)



Edmund of
Woodstock

© 2019 Alexander Bannerman
Sources: Weis, 8th ed., lines 101, 110, 155
Richardson, *Royal Ancestry*, 5 vols. (2013), I:63-78



From Chart 1E

Chart 18

Robert I of France, Count of Artois = Mathilde of Brabant

Artois and Valois

Robert II, Count of Artois, &c.
= (1) Amice de Courtenay
= (2) Agnes de Dampierre (no iss.)
= (3) Margaret of Hainault (no iss.)

From Chart 1A



Edmund Plantagenet
"Crouchback"



Henry "the Fat"

Henry III, King of England = Eleanor of Provence

Beatrice Plantagenet
= John II, Duke of Brittany and
Earl of Richmond

Edward I, King of England
= (1) Eleanor of Castile
= (2) Marguerite of France
(see below)

Edmund Plantagenet, "Crouchback," = Blanche of Artois
Earl of Lancaster and Leicester (she = 1st Henry "the Fat,"
King of Navarre)
(see below)

Philip I, Count of Artois = Blanche of Brittany
Seigneur de Conches

See Chart 17

See Chart 16

Marie of Brabant (2) = Philippe III, King of France = (1) Isabel of Aragón

Margaret of Artois = Louis of France,
Count d'Evreux

Marguerite of France
(see above)
= Edward I, King of England

See Chart 17

Charles of France, Count of Valois,
Barcelona, &c.
= (2) Catherine de Courtenay,
titular Empress of
Constantinople

Jeanne of Valois = Robert of Artois, Seigneur de
Conches, Count of Beaumont-
le-Roger, &c.

Philippe IV, "le Bel," King of France
= Jeanne of Navarre (see Chart 17)
(dau. of Henry "the Fat,"
King of Navarre and
Blanche of Artois) (see above)

- Othe of Artois
- Jeanne of Artois
= Gaston I, Count of Foix
- Marie of Artois
= John I of Flanders,
Count of Namur, &c.
- Catherine of Artois
= John II of Ponthieu,
Count of Aumale
- Isabelle of Artois (a nun)

Philip III, King of Navarre
= Jeanne of France, Queen of Navarre
dau. of Louis X, King of France



Louis IX, King of France
(see Chart 1E)
= Margaret of Provence
|
Agnes of France
= Robert II, Duke of Burgundy



France



Catherine de Courtenay
Empress of Constantinople

© 2019 Alexander Bannerman
Source: Richardson, Royal Ancestry, 5 vols. (2013), I:143-147,
III:30-33, IV:202-203, V:231-233

Blanche of Navarre (2) = Philippe VI, King of France = (1) Jeanne of Burgundy